

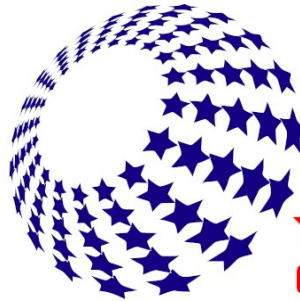


TTI Personal Talent Skills Inventory®

Dimensional Balance Report



Tom Test
Company Inc.
4-19-2010



**YOUR
COMPANY**

"Bringing Awareness"
ABC Co. Ltd.
789 Street
Springfield, USA
800-555-5555



Research suggests that the most effective people are those who understand themselves, both their strengths and weaknesses, so they can develop strategies to meet the demands of their environment.

An individual's talents and personal skills are a fundamental and integral part of who they are.

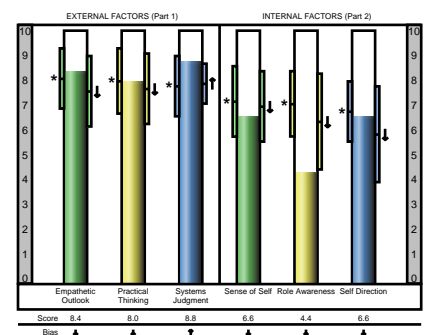
In this report we are measuring three dimensions of thought. They are:

- Intrinsic - People
- Extrinsic - Tasks or things
- Systemic - Systems

This report analyzes talents; that is, a person's ability to do things. Is the report 100% true? Yes, no and maybe. As you review your report, please determine which items are job related. This will give you insight as to where to begin development.

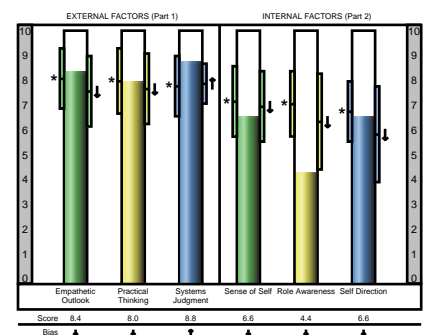
This is how Tom sees the world around him. This view measures his clarity and understanding of people, tasks and systems. It could also be looked at in terms of feeling, doing and thinking from an external standpoint. The statements below are based primarily on the 3 dimensions on the left side of the dimensional balance page and are in a random order.

- Tom feels proper planning, organization, and discipline will lead to success.
- He prefers to solve problems according to a system of logic or rules that best apply to the situation.
- He has good thinking and planning skills, and understands the underlying structure or system of what makes things work.
- He interprets situations from an abstract or systematic viewpoint.
- Tom sees order and structure as necessary requirements for getting things done.
- He focuses on the plan and puts less emphasis on the practical details and the people involved in the plan.
- He could benefit from paying closer attention to the little details and the practical processes it takes to bring a plan into reality.
- He needs to be surrounded by organizational structure that provides direction and defines the results or standards that he is expected to achieve.
- Tom tends to do things by the book or according to a plan.



This is how Tom sees himself. This view measures his clarity and understanding of himself, his roles in life and his direction for the future. The internal dimensions are a reflection of him from both personal and professional viewpoints. The statements below are based primarily on the 3 dimensions on the right side of the dimensional balance page and are in a random order.

- Tom defines who he is in terms of his direction and goals in life.
- He has somewhat developed a picture of where he is going.
- He relies on his self-esteem and future direction for strength.
- He tends to organize his life according to a set of standards and direction with which he can identify.
- Tom focuses on both who he is as a person and where his future may lead.
- He focuses on the directional aspects of life, where he is going and who he will become.
- He needs to gain a clearer understanding of his roles in life by asking himself, "What are my major roles?"
- He would benefit from listing his roles and asking himself if any of these roles are currently in transition?
- Tom doesn't have a strong understanding of his life roles.

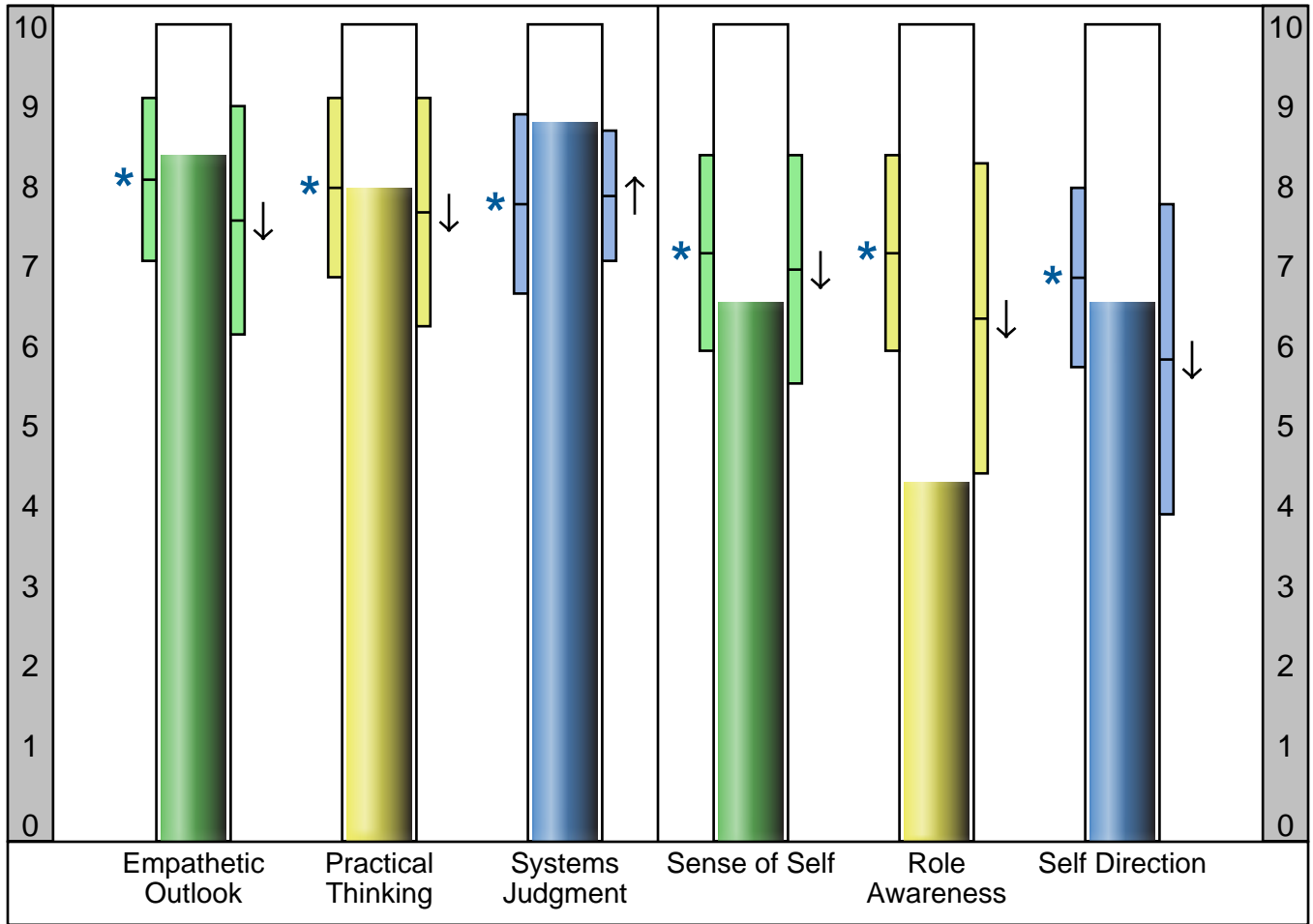




* Population mean
 ↑ Overvaluation
 ○ Neutral valuation
 ↓ Undervaluation

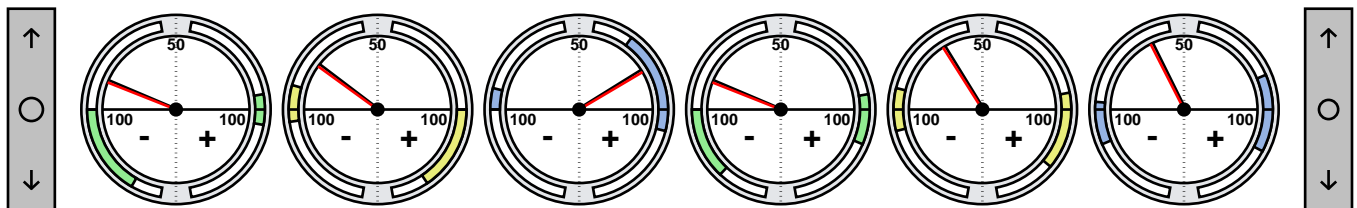
EXTERNAL FACTORS (Part 1)

INTERNAL FACTORS (Part 2)



Score 8.4 8.0 8.8 6.6 4.4 6.6

Bias ↓ ↓ ↑ ↓ ↓ ↓



Rev: 0.92-0.61